

Arzachena – Sardinien

Li Neuli Country Club - Luxury Hotel

Property ID: IT252942150



www.von-poll.it

PURCHASE PRICE: 5.500.000 EUR • LAND AREA: 70.000 m²

Property ID: IT252942150 - 07021 Arzachena – Sardinien

- At a glance
- The property
- Floor plans
- A first impression
- Details of amenities
- All about the location
- Contact partner

Property ID: IT252942150 - 07021 Arzachena – Sardinien

At a glance

Property ID	IT252942150
Bathrooms	8
Type of parking	20 x Other

Purchase Price	5.500.000 EUR
Commission	Subject to commission
Total Space	ca. 70.000 m ²

Property ID: IT252942150 - 07021 Arzachena – Sardinien

The property



Property ID: IT252942150 - 07021 Arzachena – Sardinien

The property



Property ID: IT252942150 - 07021 Arzachena – Sardinien

The property



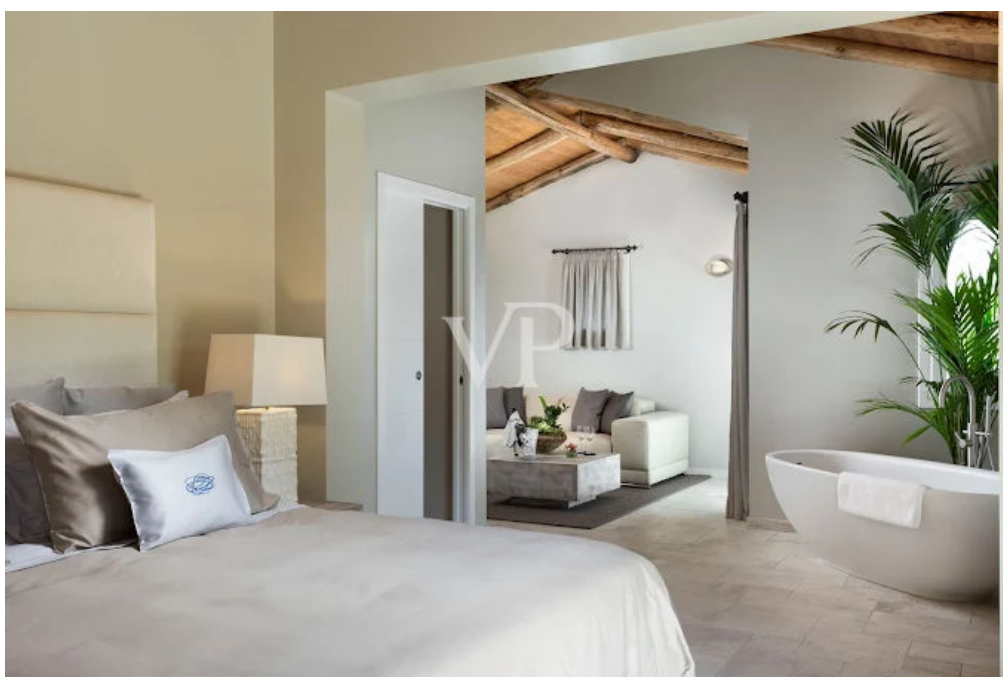
Property ID: IT252942150 - 07021 Arzachena – Sardinien

The property



Property ID: IT252942150 - 07021 Arzachena – Sardinien

The property



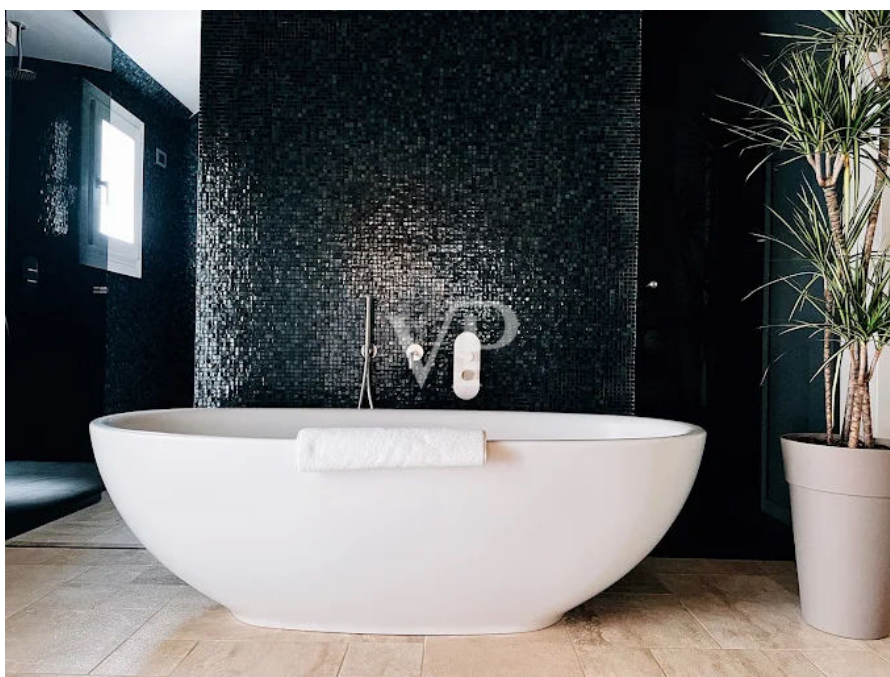
Property ID: IT252942150 - 07021 Arzachena – Sardinien

The property



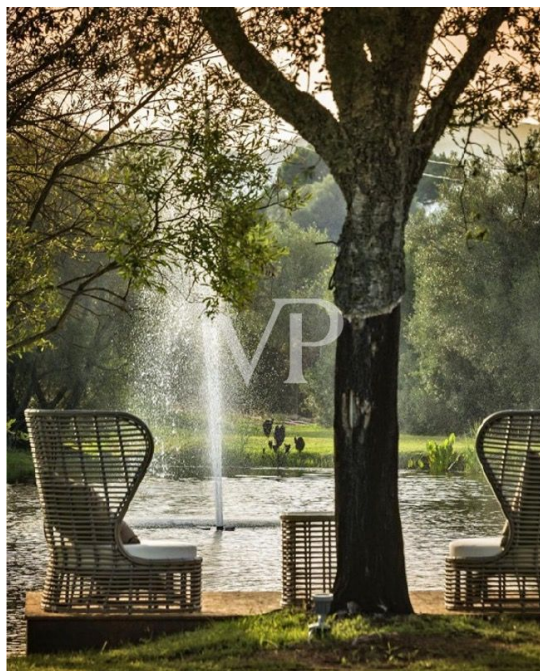
Property ID: IT252942150 - 07021 Arzachena – Sardinien

The property



Property ID: IT252942150 - 07021 Arzachena – Sardinien

The property



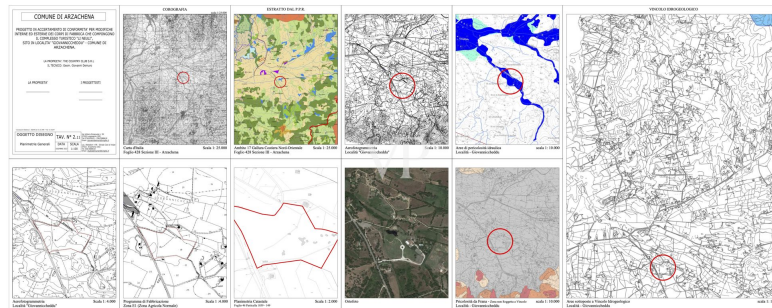
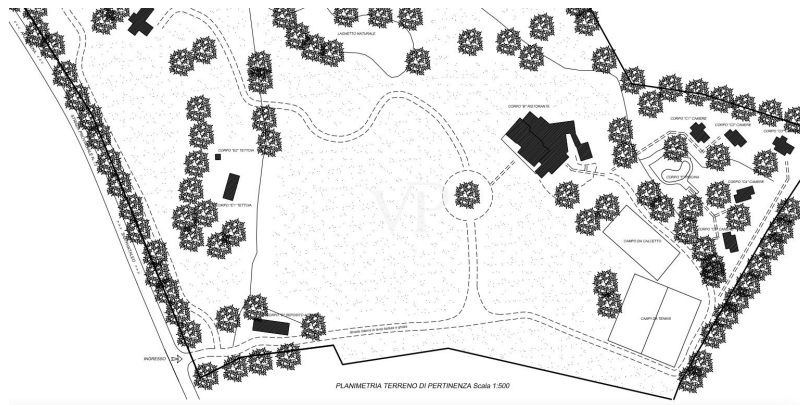
Property ID: IT252942150 - 07021 Arzachena – Sardinien

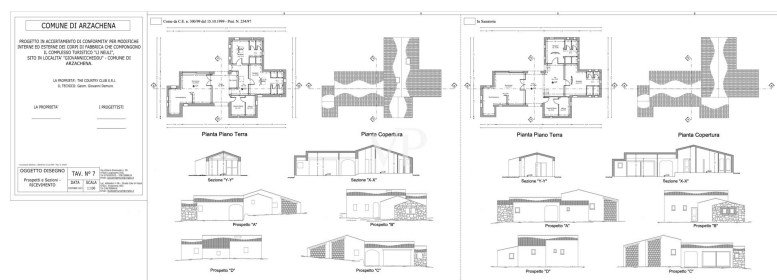
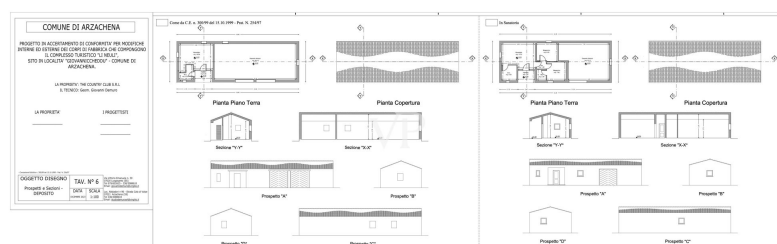
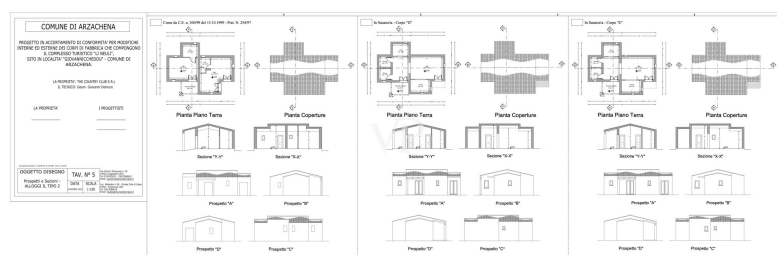
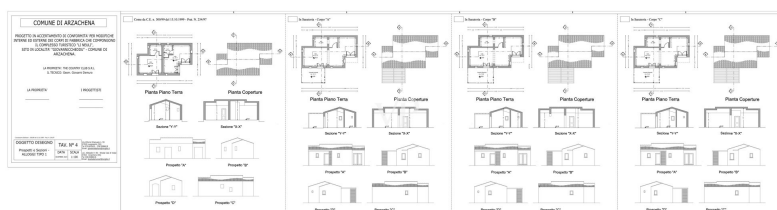
The property

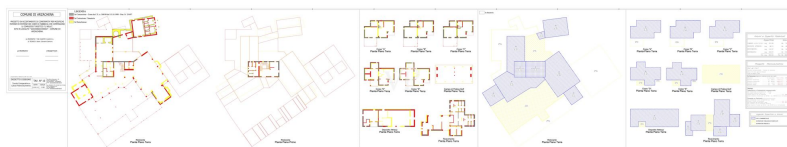
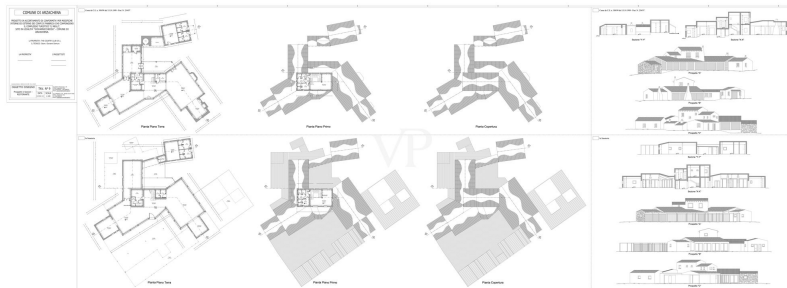
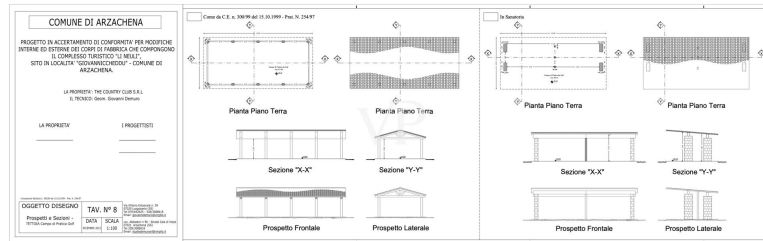


Property ID: IT252942150 - 07021 Arzachena – Sardinien

Floor plans







This floor plan is not to scale. The documents were given to us by the client. For this reason, we cannot guarantee the accuracy of the information.

Property ID: IT252942150 - 07021 Arzachena – Sardinien

A first impression

Li Neuli Country Club, exclusive luxury retreat in the heart of the Emerald Coast

Just 15 minutes from Porto Cervo, in the heart of the renowned Costa Smeralda, lies Li Neuli Country Club, one of the finest expressions of luxury hospitality in Europe. Set in a private 7-hectare natural park with a natural lake and absolute privacy, it represents a unique opportunity for investors in the Luxury Hospitality segment.

Recognized as one of the best new addresses on the Emerald Coast over the past five years, Li Neuli Country Club has received prestigious international accolades, including the title of "Best Luxury Boutique Retreat in Europe" at the Luxury Hotel Awards, placing it at the top of the luxury hospitality industry.

Main features of the property:

5 independent suites, 50 sqm each, surrounded by greenery and recently renovated to the highest standards.

Interior design by Eric Kuster, international icon of contemporary luxury.

Hotel license already approved for 10 suites (possibility to build additional 5 suites for about 300 sqm without modification of existing license).

Private heliport, strategic asset for international HNWI clientele.

Spacious Mediterranean park of 70,000 sqm, ideal for exclusive events for up to more than 1,000 guests.

Facilities and services:

Pool Club open to the public, perfect for events and relaxing moments.

Sports Club with multifunctional facilities, nature trails and areas dedicated to active wellness.

Two gourmet restaurants, designed to offer a culinary experience of the highest level.

Two designer cocktail bars, ideal for sunset aperitifs or exclusive evenings.

"Open air" spa and wellness center, complete with all services for relaxation and regeneration, surrounded by nature.

Fitness spaces equipped with modern training technologies, indoor and outdoor.

Li Neuli Country Club is not just an accommodation facility: it is an exclusive destination, a place where nature, privacy, luxury and design come together to offer an unparalleled experience. A strategic investment in one of the most iconic locations in the Mediterranean.

Property ID: IT252942150 - 07021 Arzachena – Sardinien

Details of amenities

Private Heliport

Pool club open to the public

Sports club with multi-purpose facilities and nature trails

2 restaurants

2 cocktail bars

Facility suitable for exclusive events for up to 1000 guests

Spa / wellness center "open air"

Rooms used for fitness

Possibility to expand suites

Property ID: IT252942150 - 07021 Arzachena – Sardinien

All about the location

The property is located in Località Giovannicchedu, in the municipality of Arzachena, in one of the most private and suggestive areas of the Costa Smeralda, just 17 km from Porto Cervo and 30 km from Olbia-Costa Smeralda Airport. Surrounded by Gallura nature, among hills, granite rocks and Mediterranean vegetation, it offers total privacy and immediate access to the area's most exclusive services and attractions.

Within a few kilometers are some of the most iconic beaches in the Mediterranean:

Liscia Ruja: 3 km

Prince's Beach: 3.5 km

Romazzino: 4.4 km

Capriccioli: 6 km

Cala Pitritza: 8 km

A few minutes' drive also takes you to Baja Sardinia, the lively art village of San Pantaleo, and major beach clubs, starred restaurants, high-fashion boutiques, golf clubs, and marinas.

The area is also well served by tourist infrastructure, nature trails, archaeological sites (such as nuraghi and tombs of the giants), as well as offering a protected landscape context of high environmental value.

A rare and strategic location, combining privacy, contact with nature and immediate proximity to the symbols of Mediterranean luxury.

Property ID: IT252942150 - 07021 Arzachena – Sardinien

Contact partner

For further information, please contact your contact person:

Christian Weissensteiner

Corso Italia 1, 20122 Milano

Tel.: +39 02 6206 9360

E-Mail: milano@von-poll.com

To the Disclaimer of von Poll Immobilien GmbH

www.von-poll.com