

Amsterdam

Alexanderkade 3-2

???????? ?????: NL24185515



???? ?????: 2.300.000 EUR • ?????: ca. 207 m² • ?????: 7

???????? ??????????: NL24185515 - 1018 CH Amsterdam

- ☐ ?? ??? ??????
- ☐ ?? ?????????
- ☐ ??? ?????? ??????????
- ☐ ????????????????? ???? ??????????
- ☐ ??? ??? ??? ?????????????
- ☐ ?????? ??????????????
- ☐ ?????????????? ??????????????

*****: NL24185515 - 1018 CH Amsterdam

?? ??? ??????

*****	NL24185515	****	2.300.000 EUR
*****	ca. 207 m²	*****	*****
*****	7		
*****	3		
*****	2		
****	1888		

???????? ??: NL24185515 - 1018 CH Amsterdam

?? ???????



???????? ?????: NL24185515 - 1018 CH Amsterdam

?? ???????



???????? ??: NL24185515 - 1018 CH Amsterdam

?? ???????



??????? ???????? : NL24185515 - 1018 CH Amsterdam

?? ????????



???????? ?????: NL24185515 - 1018 CH Amsterdam

?? ????????



???????? ??: NL24185515 - 1018 CH Amsterdam

?? ???????



????????? ??????????: NL24185515 - 1018 CH Amsterdam

?? ?????????



???????? ?????: NL24185515 - 1018 CH Amsterdam

?? ???????



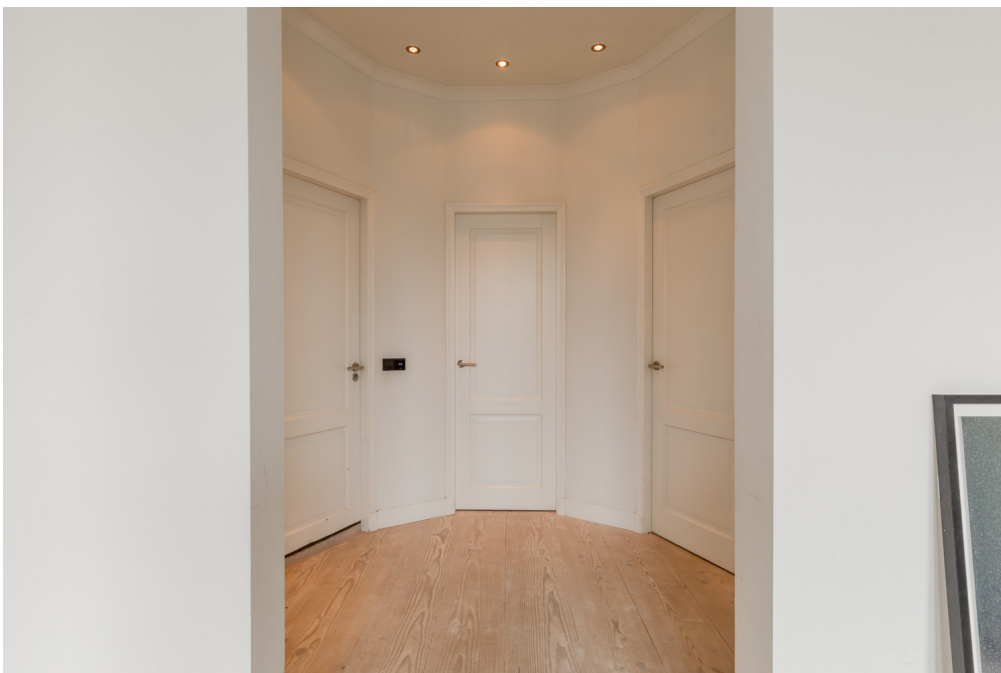
??????? ???????? : NL24185515 - 1018 CH Amsterdam

?? ????????



???????? ??: NL24185515 - 1018 CH Amsterdam

?? ???????



???????? ?????: NL24185515 - 1018 CH Amsterdam

?? ???????



???????? ??: NL24185515 - 1018 CH Amsterdam

?? ???????



???????? ?????: NL24185515 - 1018 CH Amsterdam

?? ???????



???????? ??: NL24185515 - 1018 CH Amsterdam

?? ???????



???????? ?????: NL24185515 - 1018 CH Amsterdam

?? ???????



???????? ??: NL24185515 - 1018 CH Amsterdam

?? ???????



???????? ?????: NL24185515 - 1018 CH Amsterdam

?? ???????



???????? ?????: NL24185515 - 1018 CH Amsterdam

?? ???????



???????? ??: NL24185515 - 1018 CH Amsterdam

?? ???????



???????? ?????: NL24185515 - 1018 CH Amsterdam

?? ???????



???????? ?????: NL24185515 - 1018 CH Amsterdam

?? ???????



???????? ?????: NL24185515 - 1018 CH Amsterdam

?? ???????



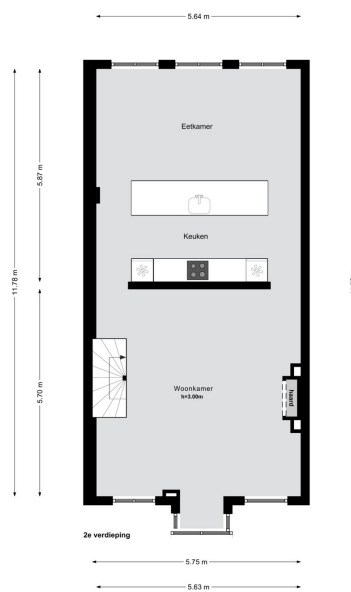
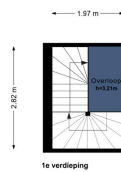
???????? ?????: NL24185515 - 1018 CH Amsterdam

?? ???????



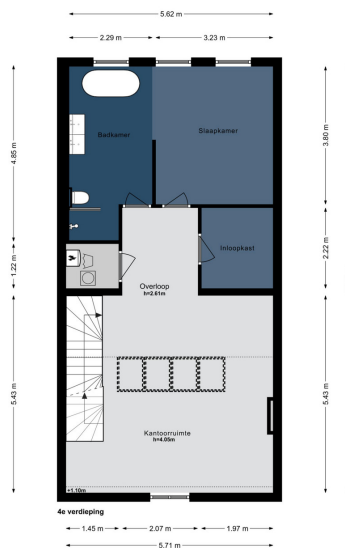
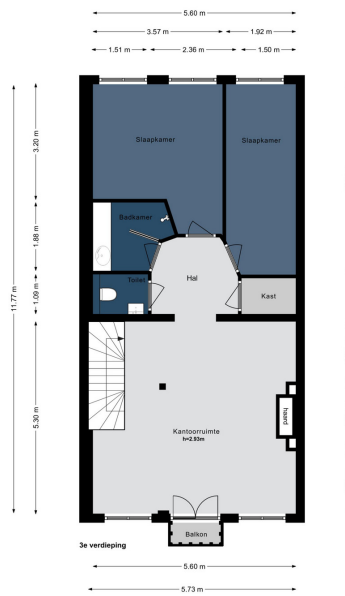
????????? ??????????: NL24185515 - 1018 CH Amsterdam

?? ?????????



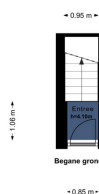
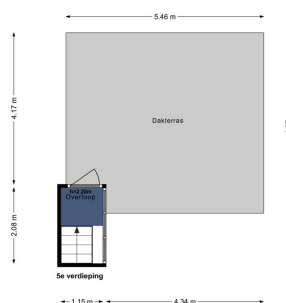
???????? ?????????: NL24185515 - 1018 CH Amsterdam

?? ?????????



???????? ?????: NL24185515 - 1018 CH Amsterdam

?? ????????



??????? ???????? : NL24185515 - 1018 CH Amsterdam

??? ?????? ??????????

Very light triple upper house of 207 m2 with roof terrace of 26 m2 located in the Plantagebuurt The apartment is located in a beautiful building from 1888 on freehold land and the foundation was renovated in 2002. From the apartment you have a beautiful view of the Singelgracht and the Tropenmuseum on every floor. There are 3 bedrooms, 2 bathrooms, a spacious kitchen, 2 spacious living rooms and a beautiful multifunctional room with an impressive roof construction.

??????? ???????? : NL24185515 - 1018 CH Amsterdam

??????????????? ??? ?????????

Layout

The house is located on the 2nd, 3rd and 4th floor of a stately mansion. Entrance on the ground floor, via the private stairs to the 2nd floor. At the front there is a bright and spacious living room with a fireplace and bay window with a view over the Singelgracht and the Tropenmuseum. At the rear is the modern kitchen with all kinds of built-in appliances. One floor higher, there is a second living room at the front with a fireplace, high windows and double doors to a balcony. At the rear are 2 neat bedrooms, a bathroom with walk-in shower, a separate toilet and a storage cupboard. The 4th floor is characterized by a beautiful characteristic roof construction. Here is a bright multifunctional space at the front. At the rear is the luxurious master bedroom with semi-open bathroom with bath, walk-in shower, toilet and double sink. Here is also the walk-in closet and a utility room. From this floor a staircase goes to the roof terrace of approximately 25 m2 with beautiful panoramic views.

???????? ??????????: NL24185515 - 1018 CH Amsterdam

??? ??? ??? ???????????

Location The apartment is located on a dead-end - and therefore traffic-free - part of the Alexanderkade, with the wide Singelgracht in front of the door. Opposite the Tropenmuseum and a stone's throw from Artis zoo and the Oosterpark. Parking in front of the door is no problem here. Public transport and a wide variety of shopping and catering facilities are also within walking distance.

??????? ???????? : NL24185515 - 1018 CH Amsterdam

????? ?????????????

Features -Apartment -Year of construction 1888 -Freehold land - Three floors -Usable floor area of 207m2 -Roof terrace of 26m2 with water and electricity -Foundation renewed in 2002 - Entrance on the ground floor -Double glazing -Small V.v.E. with 2 members - Delivery in consultation -Monument

???????? ??????????: NL24185515 - 1018 CH Amsterdam

?????????????? ?????????????????

??? ??????????????? ??????????????, ??????????????? ?? ??? ?????????? ??????????????? ???:

Joan Dik, Marie Christine Lodewijk & Elisabeth van Zijverden

De Lairesestraat 51 ????????????

E-Mail: info@von-poll.nl

To Disclaimer of von Poll Immobilien GmbH

www.von-poll.com