

Mykonos

Sunset Sublime

???????? ??: 919570



???? ??: 3.800.000 EUR

???????? ??????????: 919570 - 14561 Mykonos



?? ??? ??????



?? ?????????



??? ?????? ??????????



????????????? ????????????????

???????? ??????????: 919570 - 14561 Mykonos

?? ??? ??????

???????? ??????????	919570	???? ???????	3.800.000 EUR
???????????? ??	8	?????	????
??????????		?????????? ???????	ca. 427 m²
??????????	8		

???????? ??????????: 919570 - 14561 Mykonos

?? ?????????



???????? ??????????: 919570 - 14561 Mykonos

?? ?????????



???????? ??????????: 919570 - 14561 Mykonos

?? ?????????



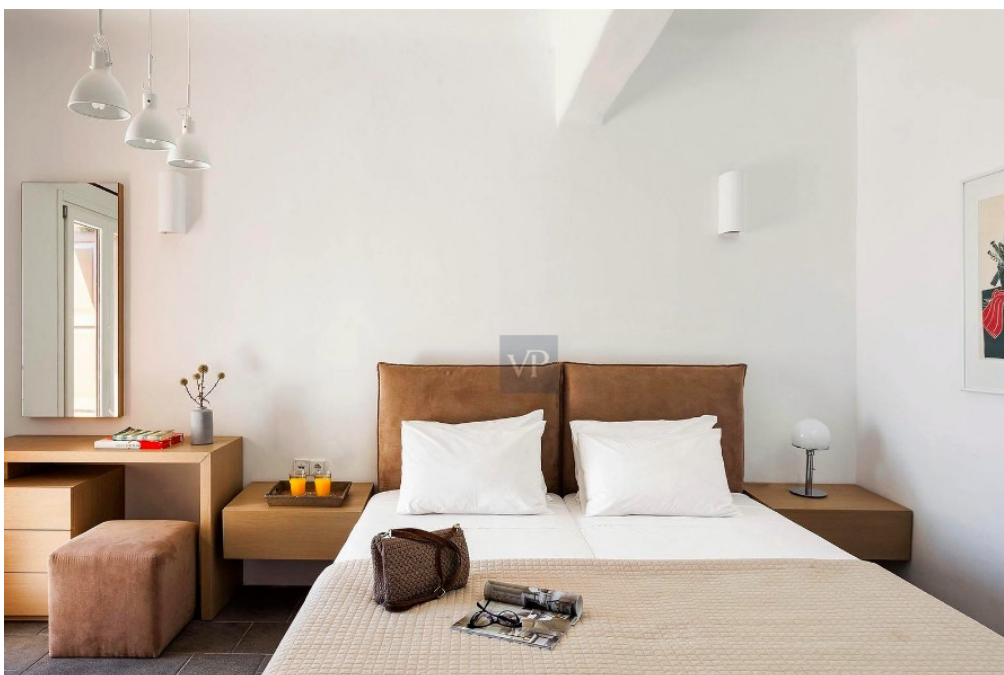
???????? ?????????: 919570 - 14561 Mykonos

?? ?????????



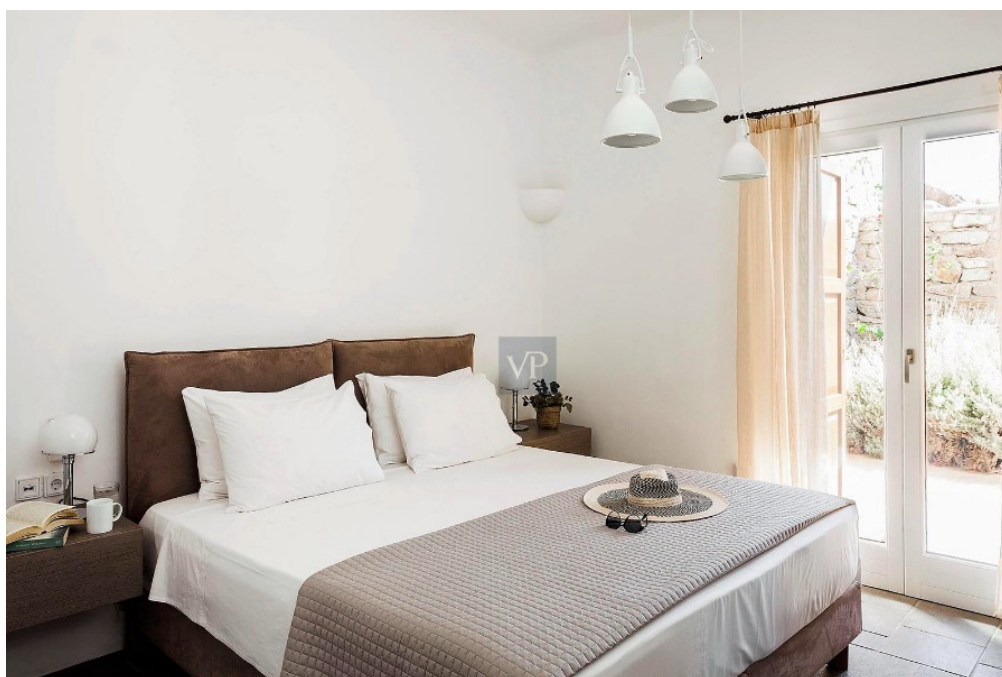
???????? ?????????: 919570 - 14561 Mykonos

?? ?????????



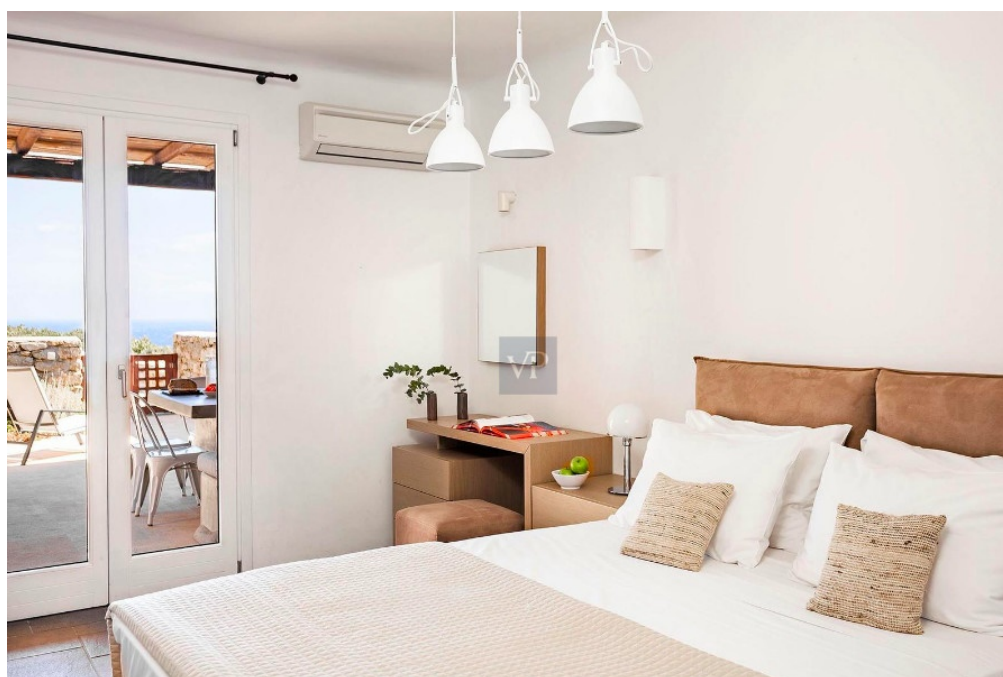
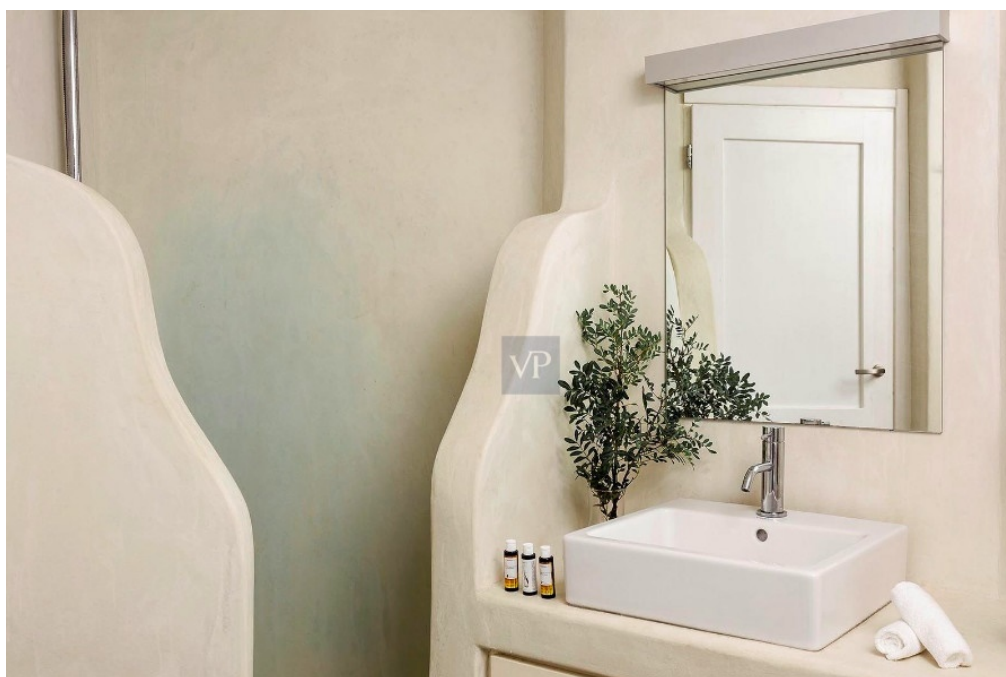
???????? ?????????: 919570 - 14561 Mykonos

?? ?????????



???????? ?????: 919570 - 14561 Mykonos

?? ???????



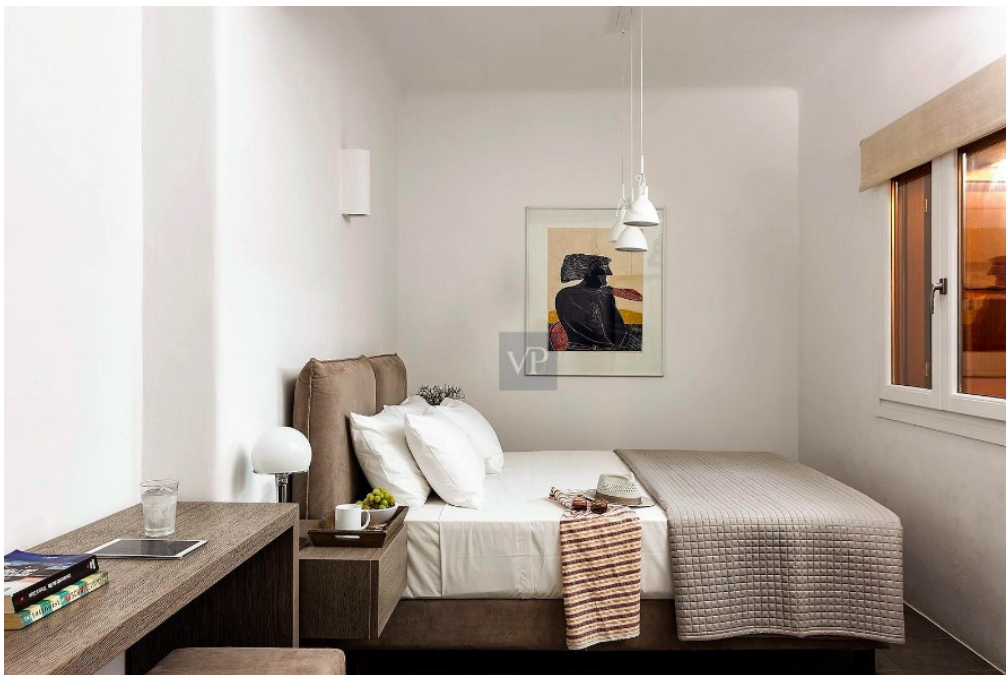
???????? ?????: 919570 - 14561 Mykonos

?? ???????



???????? ?????: 919570 - 14561 Mykonos

?? ???????



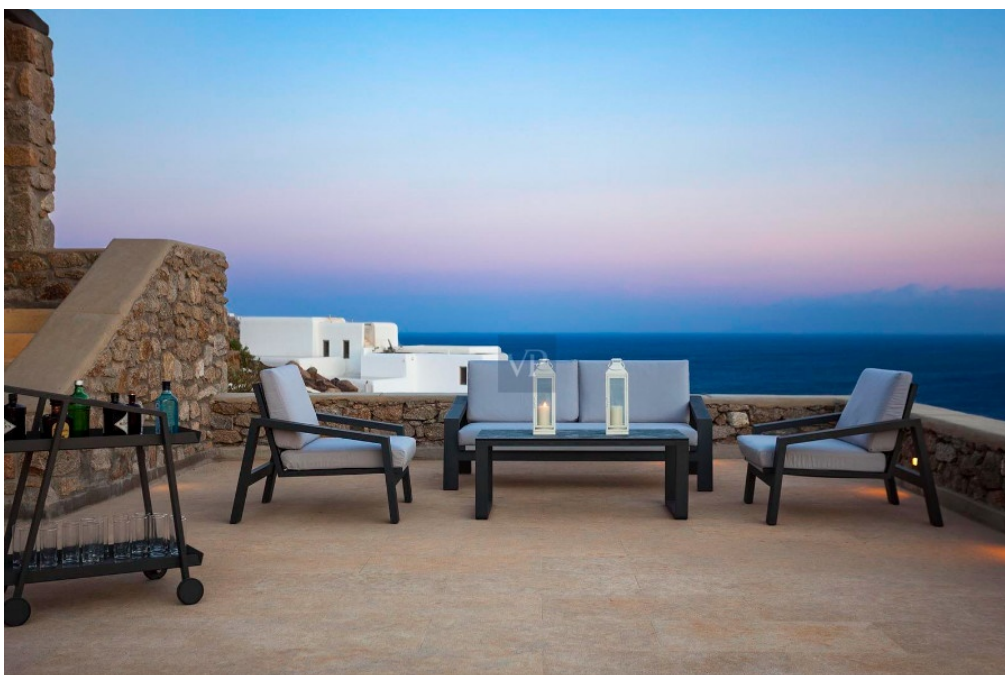
???????? ??????????: 919570 - 14561 Mykonos

?? ????????



???????? ??????????: 919570 - 14561 Mykonos

?? ????????



???????? ?????: 919570 - 14561 Mykonos

?? ???????



???????? ?????????: 919570 - 14561 Mykonos

?? ????????



??????? ???????: 919570 - 14561 Mykonos

??? ?????? ?????????

Sunset Sublime perfectly sited between the St John Area and Aleomandra area on Mykonos island. This home is considered to be one of the most privileged properties on the island as it is only 12' away from the main town and 5' away from Ornos bay with its cafes and restaurants and bakery, super market and only 2' away from the famous St. John beach. What a treat and unbeatable location! Sunset Sublime offers authentic Tuscan architecture exquisitely manicured and landscaped grounds that were meticulously designed and developed to compliment the Cycladic architecture and style. Experience an unparalleled lifestyle and the epitome of luxury estate living with large scale bedrooms and the finest materials imported from Italy including custom marble flooring and surfaces, and reclaimed Italian tiles throughout. Architectural features include well crafted doors and windows that perfectly frame the tranquil views of the Sea view and outdoors. Enjoy a seamless flow that connects the indoors with beautiful symmetrical elements of the outdoor areas. The infinity-edge pool and dramatic sunset are simply divine to watch while enjoying a glass of Chardonnay. Upstairs the sumptuous primary suite enjoys its own private terrace overlooking the gorgeous Aegean blue. Downstairs 8 additional ensuite guest-bedrooms all ensuite, laundry rooms, staff quarters complete the main structure. Sunset Sublime is part of a 3 home complex offering security and total privacy while enjoying the benefits of near by hotels such as tennis courts, spa facilities, restaurants in walking distance from the complex.

???????? ??????????: 919570 - 14561 Mykonos

????????????? ????????????????

??? ?????????????? ??????????????, ?????????????? ?? ??? ?????????? ?????????????? ???:

VON POLL REAL ESTATE Athens

Kifisias Avenue 227, 14561 Kifisia

Tel.: +30 21 06 14 87 77

E-Mail: salesgreece@von-poll.com

???? ?????????? ???????? ??? von Poll Immobilien GmbH

www.von-poll.com