

Mykonos

Opulence Estate

????????? ??????????: 919475



???? ??????: 3.500.000 EUR • ?????? ????: 1.500 m²

???????? ??????????: 919475 - 14561 Mykonos



?? ??? ??????



?? ?????????



??? ?????? ??????????



????????????? ????????????????

???????? ??????????: 919475 - 14561 Mykonos

?? ??? ??????

???????? ??????????	919475	???? ???????	3.500.000 EUR
???????????? ???	6	?????	?????
??????????		?????????? ???????	ca. 335 m²
??????????	7		

???????? ?????: 919475 - 14561 Mykonos

?? ???????



???????? ?????: 919475 - 14561 Mykonos

?? ???????



???????? ?????: 919475 - 14561 Mykonos

?? ???????



???????? ??????????: 919475 - 14561 Mykonos

?? ?????????



???????? ?????????: 919475 - 14561 Mykonos

?? ????????



???????? ??????????: 919475 - 14561 Mykonos

?? ?????????



???????? ?????????: 919475 - 14561 Mykonos

?? ?????????



???????? ?????????: 919475 - 14561 Mykonos

?? ????????



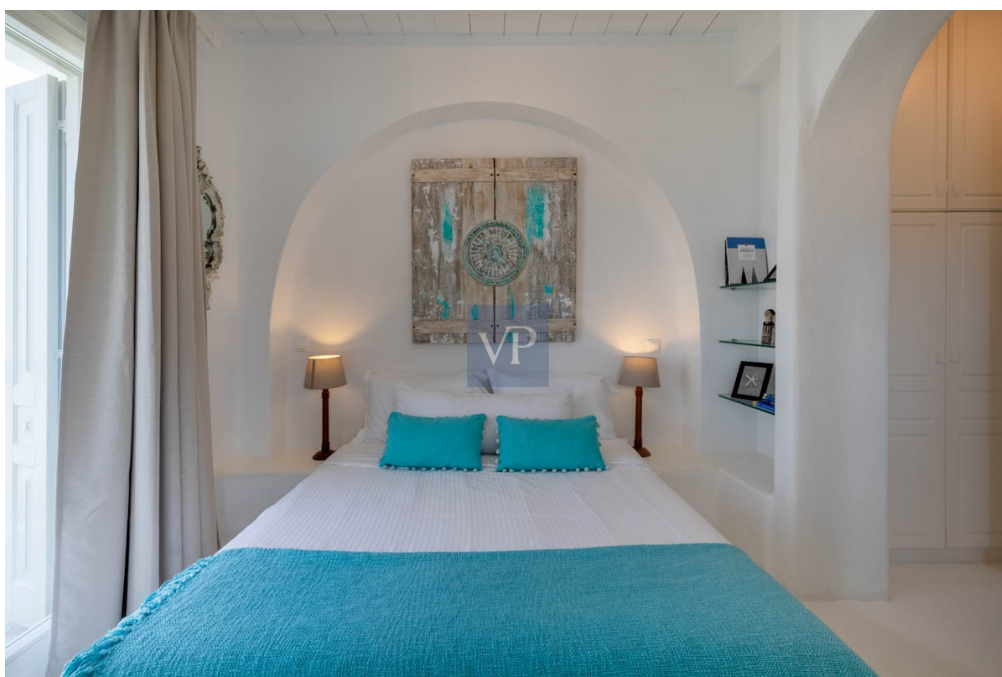
???????? ?????: 919475 - 14561 Mykonos

?? ???????



???????? ??????????: 919475 - 14561 Mykonos

?? ?????????



???????? ?????????: 919475 - 14561 Mykonos

?? ?????????



???????? ??????????: 919475 - 14561 Mykonos

?? ?????????



???????? ??????????: 919475 - 14561 Mykonos

?? ?????????



???????? ?????: 919475 - 14561 Mykonos

?? ???????



???????? ??????????: 919475 - 14561 Mykonos

?? ?????????



??????? ???????: 919475 - 14561 Mykonos

??? ?????? ?????????

Indulge in the awe-inspiring spectacle of the sun as it gracefully descends, casting a mesmerizing palette of vivid reds and radiant golds upon the tranquil sea, allowing yourself to be fully immersed in the unfolding beauty. The Opulence Estate comprises of two separate villas, each boasting a remarkable architectural design that exudes a distinctive charm resonant of the Mediterranean essence. Both villas present an identical floor plan, characterized by a timeless interior style with white wooden beams on the ceilings, while traditional arches gracefully guide one's journey from the hallway into the captivating open-plan living spaces. The kitchens are equipped with white wooden cabinets and countertops, perfectly aligned with the overall aesthetic. The first-floor owner's suites boast large en-suite bathrooms and private balconies that, from an intimate vantage point, offer commanding views of the pool and terraces combined with an enchanting panorama of breathtaking vistas of the magnificent Aegean sea. These remarkable villas share an array of exceptional outdoor spaces, including a secluded private pool and expansive panoramic terraces, meticulously designed to facilitate outdoor living and dining experiences imbued with unparalleled sophistication. To further enrich these spaces, a covered bar adds an air of exclusivity and allure. Moreover, two generously proportioned and luminous guest rooms, with en-suite bathrooms, seamlessly adjoin the main living areas, unveiling their splendor to the captivating views that unfold before them. Strategically situated in close proximity to the vibrant hub of Mykonos town and the renowned beaches of Ornos and Saint John, the Opulence Estate ensures utmost convenience and effortless access to these coveted destinations, allowing you to fully embrace the quintessential essence of this captivating island paradise.

???????? ??????????: 919475 - 14561 Mykonos

????????????? ????????????????

??? ?????????????? ??????????????, ?????????????? ?? ??? ?????????? ?????????????? ???:

VON POLL REAL ESTATE Athens

Kifisias Avenue 227 Athen
E-Mail: salesgreece@von-poll.com

To Disclaimer of von Poll Immobilien GmbH

www.von-poll.com