

Kifissia

Mirabelle

???????? ?????: 912438

???? ?????: 2.450.000 EUR • ?????? ????: 1.569 m²

??????? ?????????: 912438 - 14562 Kifissia

● ?? ??? ??????

● ?? ?????????

● ??? ?????? ?????????

● ????????????? ?????????????

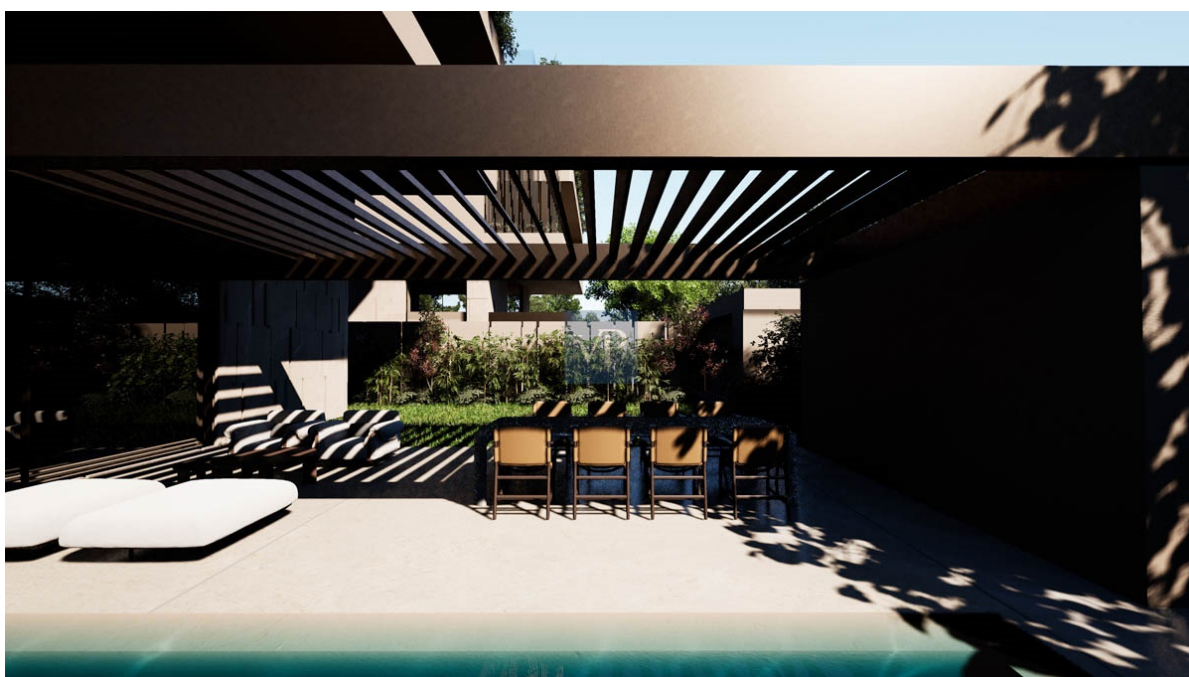
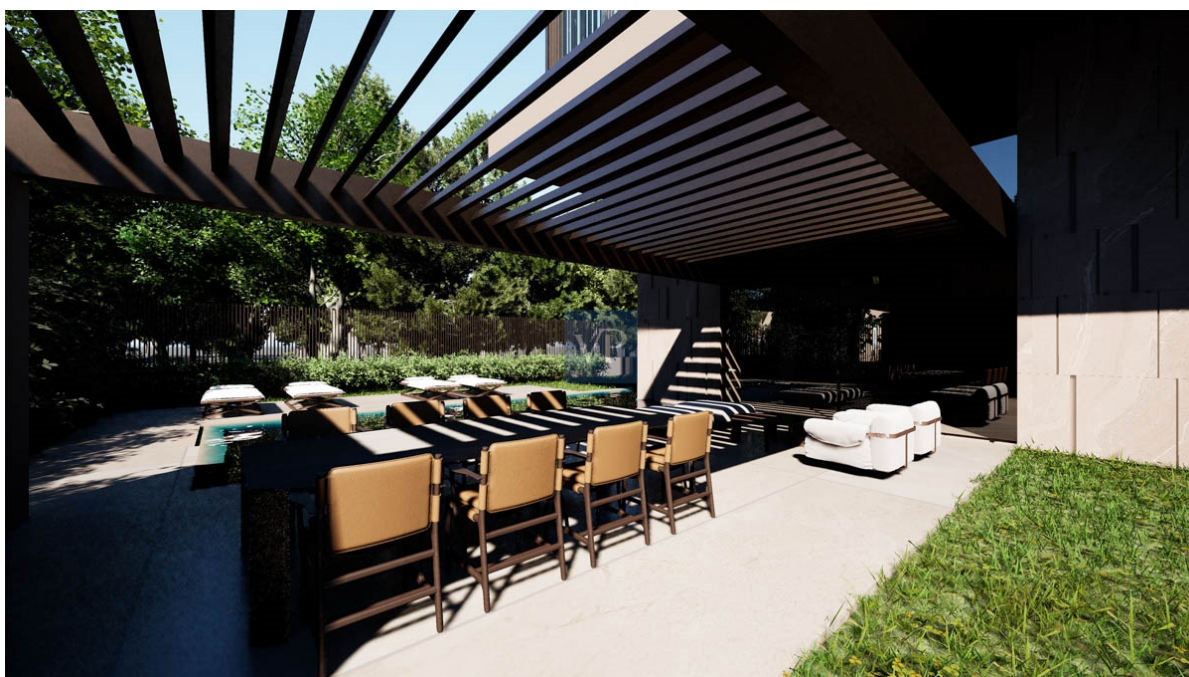
???????? ??????????: 912438 - 14562 Kifissia

?? ??? ??????

???????? ??????????	912438	???? ??????	2.450.000 EUR
???????????? ???	3	????????????	??????
??????????		?????????? ??????	ca. 197 m²
??????????	3		

???????? ?????: 912438 - 14562 Kifissia

?? ???????



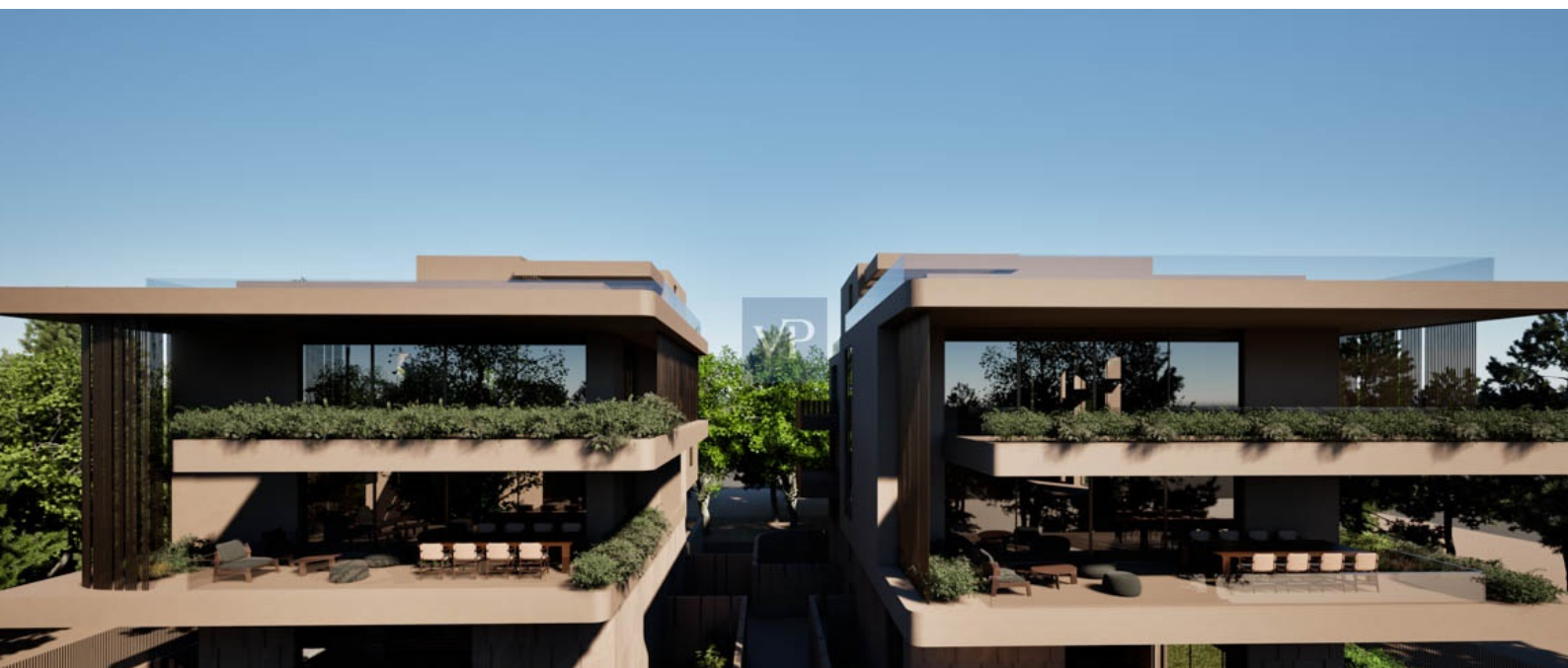
???????? ?????????: 912438 - 14562 Kifissia

?? ????????



???????? ??????????: 912438 - 14562 Kifissia

?? ?????????



???????? ?????????: 912438 - 14562 Kifissia

?? ?????????



???????? ?????: 912438 - 14562 Kifissia

?? ???????



???????? ??????????: 912438 - 14562 Kifissia

?? ?????????



??????? ???????: 912438 - 14562 Kifissia

??? ?????? ?????????

In the heart of the prestigious Kefalari neighborhood in Kifisia, an extraordinary opportunity awaits, a luxurious first-floor residence that redefines high-end living. Designed with impeccable attention to detail and a sophisticated architectural aesthetic, this property offers a harmonious blend of modern elegance and cosmopolitan influences, tailored for discerning individuals who appreciate the finer things in life.

As you step into this 197.25 sq.m. Mirabelle residence, you are welcomed by an inviting entrance hall that sets the tone for the refined spaces beyond. The meticulously designed living room, bathed in natural light, serves as the perfect backdrop for intimate gatherings or relaxed evenings. The adjoining dining room exudes timeless elegance, while the modern kitchen, a masterpiece of functionality and style, inspires culinary creativity. A guest WC adds to the convenience of this thoughtfully designed home.

The private quarters are equally exquisite, featuring a grand master bedroom with a luxurious ensuite bathroom, providing a serene retreat. Two additional bedrooms, each with their own ensuite bathrooms, offer comfort and privacy for family or guests.

The allure of this residence extends beyond the main living areas. In the basement of Building B, a 62.80 sq.m. studio provides a versatile space that can serve as a guest suite, office, or personal sanctuary. A spacious storage room of 12.50 sq.m. ensures all your belongings are neatly organized, while two dedicated parking spaces add an extra layer of convenience.

Living here means not only embracing a luxurious lifestyle but also becoming part of the vibrant community of Kefalari. Renowned for its lush greenery, boutique shops, gourmet restaurants, and exclusive ambiance, Kefalari offers a perfect blend of tranquility and urban sophistication. Whether strolling through its picturesque streets or savoring the local café culture, this neighborhood promises an unparalleled quality of life.

This is more than just a residence; it's an invitation to immerse yourself in the elegance and prestige of one of Athens' most sought-after areas. Owning this property means claiming your place in a neighborhood that perfectly balances heritage, modernity, and an unmistakable air of aristocratic charm.

???????? ??????????: 912438 - 14562 Kifissia

????????????? ????????????????

??? ?????????????? ??????????????, ?????????????? ?? ??? ?????????? ?????????????? ???:

VON POLL REAL ESTATE Athens

Kifisias Avenue 227, 14561 Kifisia

Tel.: +30 21 06 14 87 77

E-Mail: salesgreece@von-poll.com

???? ?????????? ???????? ??? von Poll Immobilien GmbH

www.von-poll.com