

Neo Psychiko

The Elegant Nook

????????? ??????????: 1079816



????? ?????????: 480.000 EUR

??????? ???????: 1079816 - 15453 Neo Psychiko

- ?? ??? ??????
- ?? ????????
- ??? ?????? ??????????
- ?????????????? ????????????????

??????? ?????????: 1079816 - 15453 Neo Psychiko

?? ??? ??????

??????? ????????	1079816	???? ??????	480.000 EUR
?????????? ??	3	??????????	??????
??????????		?????????? ??????	ca. 120 m²
??????????	2		

??????? ???????? : 1079816 - 15453 Neo Psychiko

?? ????????



??????? ?????????: 1079816 - 15453 Neo Psychiko

?? ????????



??????? ???????? : 1079816 - 15453 Neo Psychiko

?? ????????



??????? ???????? : 1079816 - 15453 Neo Psychiko

?? ????????



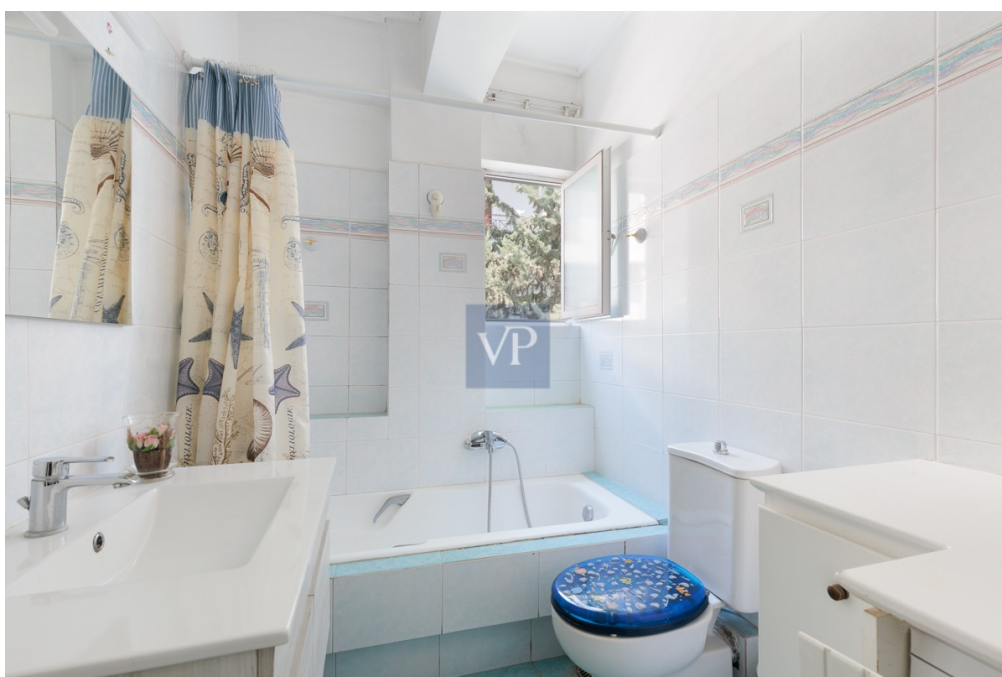
??????? ???????? : 1079816 - 15453 Neo Psychiko

?? ????????



??????? ???????? : 1079816 - 15453 Neo Psychiko

?? ????????



??????? ???????? : 1079816 - 15453 Neo Psychiko

?? ????????



??????? ???????: 1079816 - 15453 Neo Psychiko

??? ?????? ??????????

Imagine stepping into your new home, where comfort and elegance meet in perfect harmony. As you enter this charming third-floor apartment, you are immediately welcomed by a spacious, open-plan living and dining area. The cozy fireplace adds warmth and character, creating a perfect space for relaxation or entertaining guests. Seamlessly connected to the kitchen, the living area flows effortlessly, allowing you to enjoy the vibrant heart of the home.

Step outside onto the generous 35 sq.m. north-facing balcony, where the greenery around you provides a tranquil escape from the bustle of everyday life. The serene atmosphere invites you to unwind, sip your morning coffee, or enjoy a quiet evening with a view of the lush surroundings.

The apartment is thoughtfully designed, with three well-appointed bedrooms offering comfort and privacy. Two modern bathrooms provide convenience for the whole family, and ample storage space ensures everything has its place. You'll appreciate the added benefits of a designated underground parking space and an additional pilotis parking, making it easy to come and go.

Additional conveniences like the building's elevator and a 7 sq.m. storage room offer practicality and ease of living. The apartment is ideally situated in a highly sought-after area, with easy access to everything you need—schools, parks, public transport, hospitals, sports centers, and green spaces. Whether you're a family or an individual, this apartment provides a perfect balance of convenience and tranquility, making it a truly exceptional place to call home.

Wouldn't you love to make this peaceful, well-connected haven your own?

??????? ?????????: 1079816 - 15453 Neo Psychiko

????????????? ???????????????

??? ?????????????? ?????????????, ?????????????? ?? ??? ?????????? ?????????????? ???:

VON POLL REAL ESTATE Athens

Kifisias Avenue 227, 14561 Kifisia

Tel.: +30 21 06 14 87 77

E-Mail: salesgreece@von-poll.com

???? ?????????? ???????? ??? von Poll Immobilien GmbH

www.von-poll.com